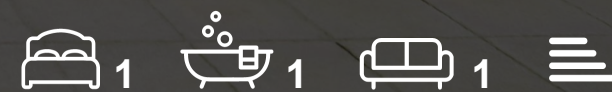




c 306 Roseville Street
St. Helier, Jersey, JE2 4DF

£345,000



c 306 Roseville Street

St. Helier, Jersey, JE2 4DF

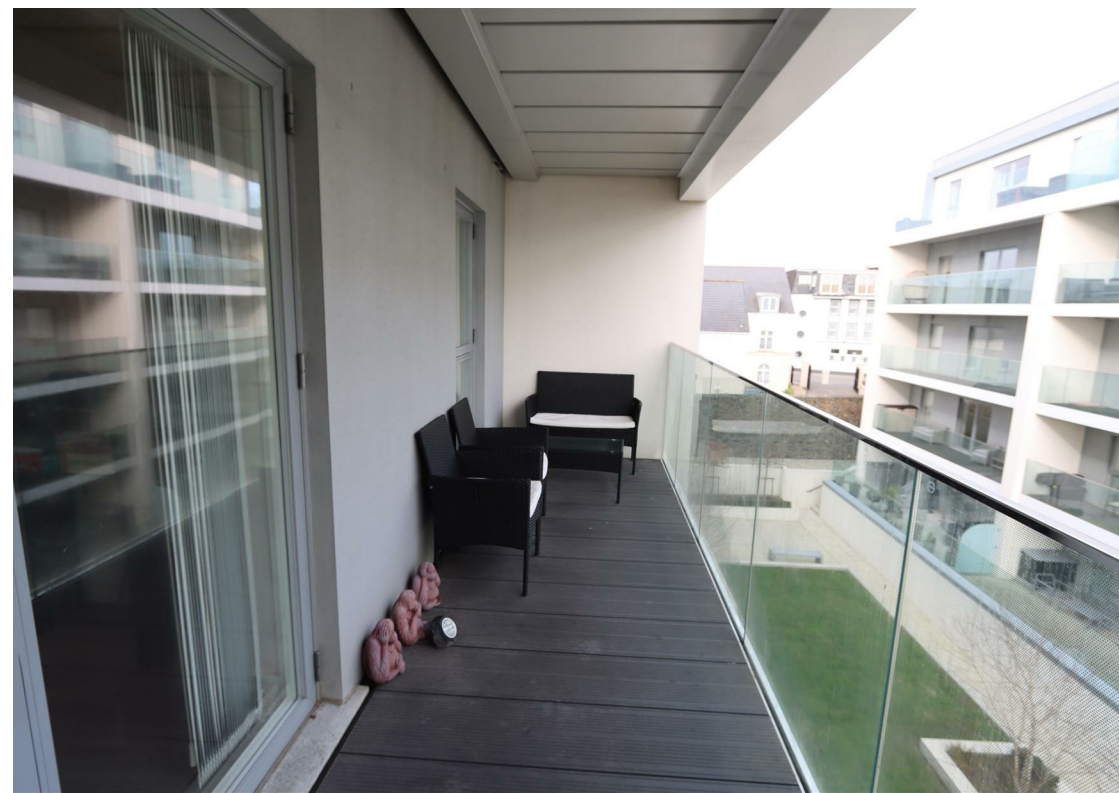
New to the Market: Metropoli Apartments - Introducing a stylish and impeccably presented one-bedroom apartment located in the highly sought-after Metropoli development, just minutes from the heart of St. Helier. Situated on the third floor, this modern residence offers serene views of the communal gardens.

The accommodation boasts an open-plan kitchen and living area, featuring sleek contemporary grey units complemented by contrasting worktops and splashbacks. A separate utility area adds to the convenience.

Access to a spacious balcony, which spans the length of the apartment, is available from the sitting room, providing an ideal spot to enjoy the afternoon sun.

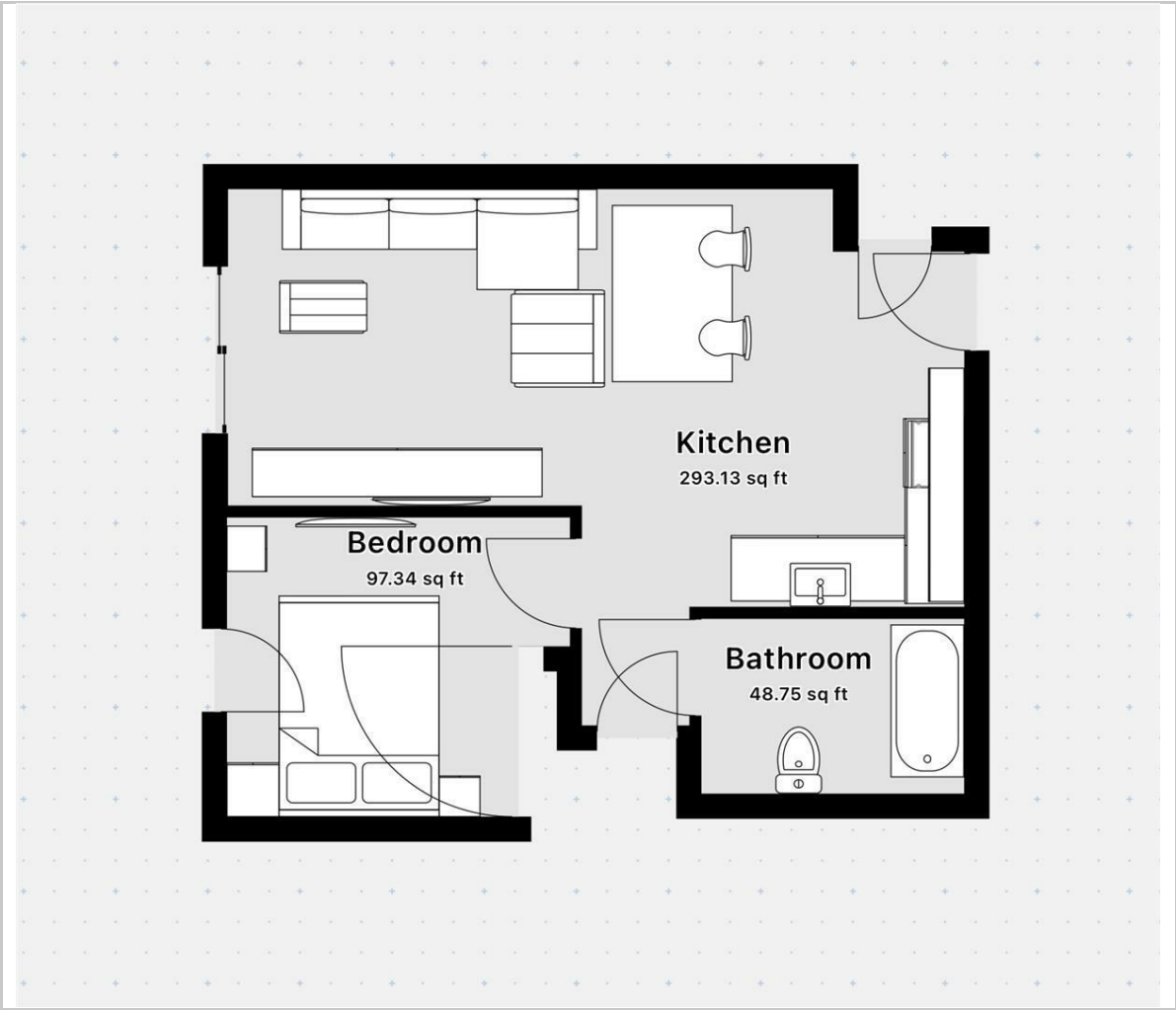
Additional features include secure undercover parking for one car and extra storage space. The prime location offers the best of both worlds, with a short stroll to the vibrant town center and the picturesque beachfront at Havre des Pas.

This property is available via Share Transfer.





Floor Plan



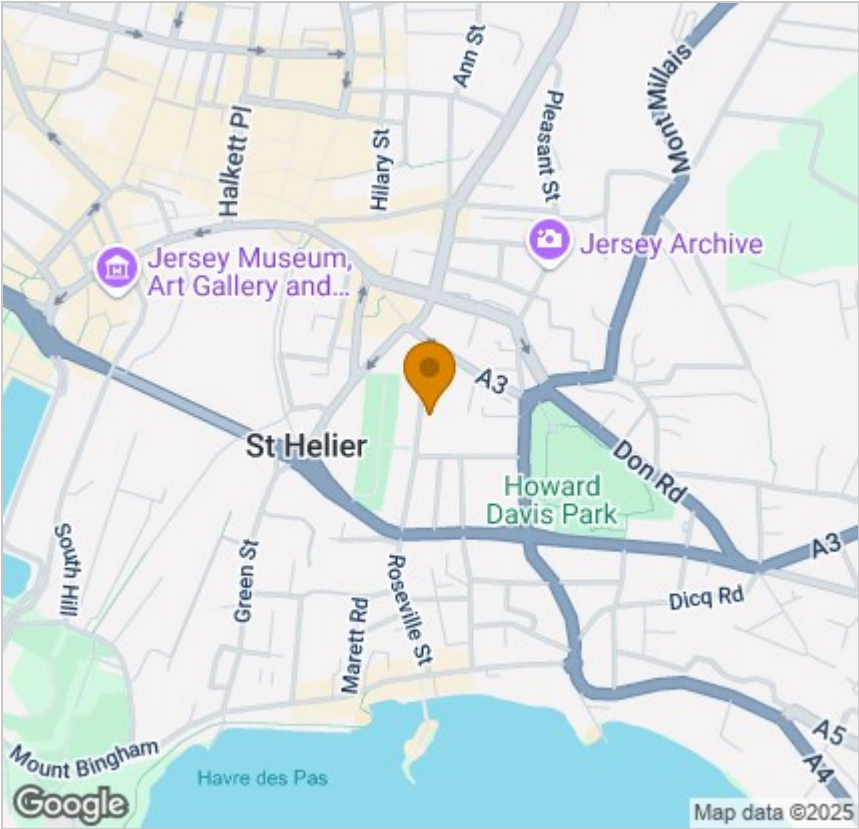
Viewing

Please contact our Troys Estate Agency Ltd Office on 01534 607070 if you wish to arrange a viewing appointment for this property or require further information.

These particulars, whilst believed to be accurate are set out as a general outline only for guidance and do not constitute any part of an offer or contract. Intending purchasers should not rely on them as statements of representation of fact, but must satisfy themselves by inspection or otherwise as to their accuracy. No person in this firms employment has the authority to make or give any representation or warranty in respect of the property.

10 Sand Street, St Helier, Jersey, JE2 3QF
Tel: 01534 607070 Email: duty@troysjsy.com

Area Map



Energy Efficiency Graph

